



NEXTLAND

GROW YOUR GAINS

FOREST FIRE BURN SCAR

Supporting vegetation recovery and post-fire management

Detecting and assessing the spatial extent and distribution of burn scar can support forestry services to process efficient **vegetation recovery and post-fire management**. Typically, Forest Fire Burn Scar product is used to localize areas affected by fires and to get information about severity of damages. Together with Forest Classification product it allows to **assess amount of each tree species damaged** by fire.

"Assess impact of natural and man-made disasters and mitigate their impact based on satellite data"

Alireza Taravat
DEIMOS
Project Manager
Senior Remote Sensing Data Scientist

Key benefits

- ⊕ Based on free Sentinel-2 imagery which makes the derived products cheaper than the existing ones in the market
- ⊕ An excellent weekly product to provide analysis ready information and ease crisis management
- ⊕ Easy to access products
- ⊕ Quick and up-to-date



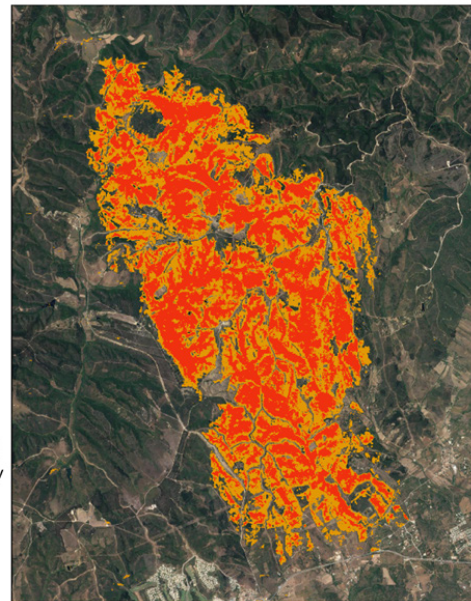
NEXTLAND

GROW YOUR GAINS



Collaborators

- ⊕ National/International forestry institutions
- ⊕ Insurance companies
- ⊕ Forestry service provider
- ⊕ National environment agency



An example of forest fire burn scar over an area in Spain

Key specifications

Key specifications	Forest Fire Burn Scar
Unit	-
Pixel size	10 m
Temporal resolution	Weekly
Spatial coverage	Europe (current version trained and tested for Portugal)
Temporal coverage	April 2015 – Present
Satellites used	Sentinel-2 L2A, L2Ap
Other data used	-
Timeliness	1-2 days
Reference system	WGS84
File format	GeoTIFF



www.store4eo.com

